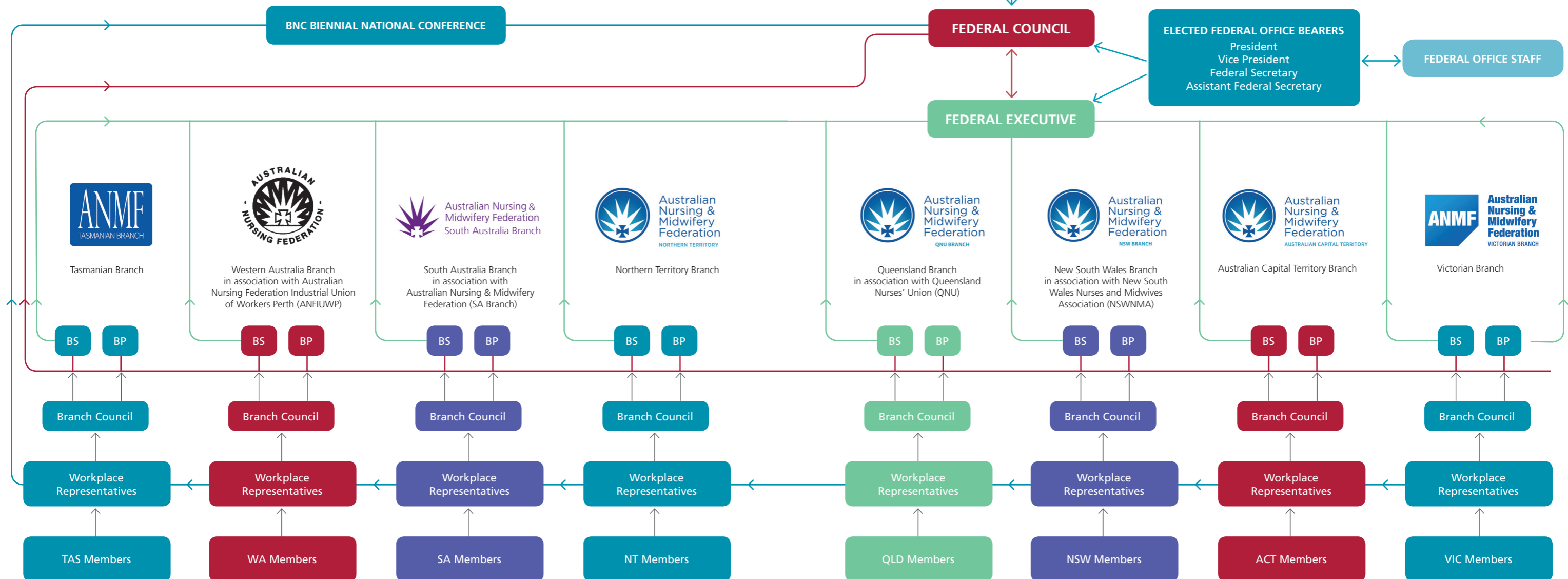
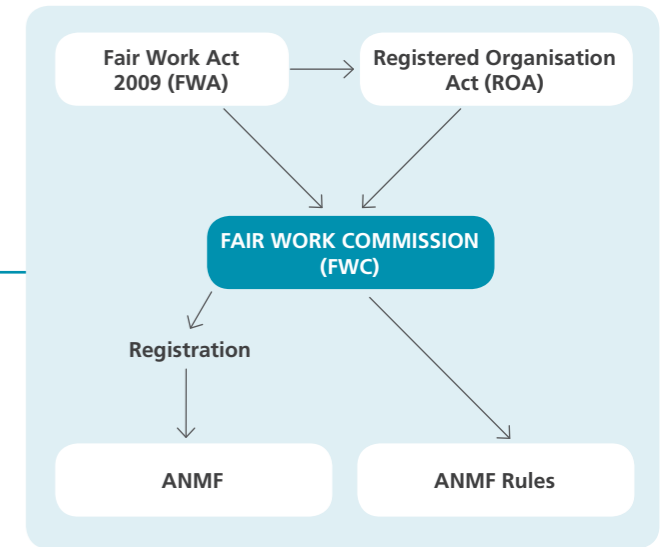


Did you know that as a member of a state or territory nursing and midwifery union means you are also a member of the ANMF, the national nursing and midwifery union?

The ANMF is a federation established under the Fair Work Act with branches in every state and territory. Each branch comprises members who elect workplace representatives, branch council, including branch president, and full time elected officials, secretary and assistant secretary. Branches also employ specialist staff to provide legal, industrial, professional and education services.

Just as members elect state officials they also elect the federal office bearers.

Workplace representatives meet nationally at the Biennial National Conference every two years to debate and develop ANMF policies.



KEY: BS: Branch Secretary, BP: Branch President